



R410A Mini-Split U-Match System

Reasonable Choice for Your All-In-One System Solution



Join us to enjoy both a comfortable and green life!

Trane U-Match series is tailor-made to your personality and a perfect choice to meet your requirement for comfort. Wherever you are, either in small-sized stores, houses, restaurants, offices or condos and villas, etc., you can thoroughly enjoy healthy, green and comfortable experience that U-Match brings to you. Accurate temperature control system, outstanding energy-saving technology, comfortable air circulation system, flexible and easy installation, various simple yet fashionable appearances options and ultra silent design, all these and more are just designed to offer you joyful experiences !

Outdoor Units:



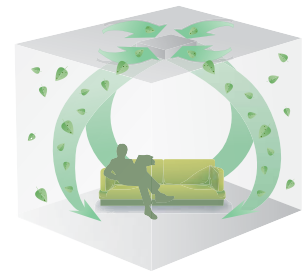
- Universal outdoor unit can match with different types of indoor units
- Free combination to meet different preference and match interior decoration
- Optimized components for R410A refrigerant
- Less stock or warehouse
- Ease of installation and service including spare part management

Wired/Remote Controllers:



- Energy-saving mode
- Sleep mode
- Fresh function (for concealed type only)
- Power-fail memory setting
- Room sensor location selection
- Self-diagnosis
- Outdoor ambient temperature display (for concealed type only)





Comfortable Air Flow & Humidity Control



Fresh Air Control

Concealed U-Match Systems



- Compact design, with 220mm minimum height, requiring less space for installation
- Simple wire connection design
- Reserved interface for 11 steps adjustable fresh air control
- Long lifespan and washable filter fitted as standard
- Wired and remote controllers are available
- Return air plenum fitted as standard
- High static pressure upto 150Pa*
- Drain pump with 1100mm lift head (for 24~60kBtu/h unit)(Optional)



Environmental friendly



Easy Installation



Wide Range Operation Temp.



Quiet Design



Compact Design



Long Life and Washable Filter

Convertible U-Match Systems



- Compact design with 188mm minimum height, requiring less space for installation
- Plastic case
- Long lifespan and washable filter fitted as standard
- Wired and remote controllers are available
- Stand and ceiling convertible options
- Low noise operation

Cassette U-Match Systems



- Compact design with 230mm minimum height, requiring less space for installation
- Wired and remote controllers are available
- Drain pump fitted as standard
- Long lifespan and washable filter fitted as standard
- Low noise operation



Product Specification 50Hz: Standard Models - Concealed Type

Model	Indoor Unit	4MWD0509AB	4MWD0512AB	4MWD0518AB	4MWD0524AB	4MWD0530AB	4MWD0536AB	4MWD0536AB	4MWD0542AB	4MWD0548AB	4MWD0560AB											
	Outdoor Unit	4TWK0509AB	4TWK0512AB	4TWK0518AB	4TWK0524AB	4TWK0530AB	4TWK0536AB	4TWK0536AD	4TWK0542AD	4TWK0548AD	4TWK0560AD											
Function		Cooling Heating	Cooling Heating	Cooling Heating	Cooling Heating	Cooling Heating	Cooling Heating	Cooling Heating	Cooling Heating	Cooling Heating	Cooling Heating											
Nominal Capacity	Btu/h	8,900	9,700	11,900	12,300	17,000	19,400	24,000	27,300	28,300	31,000	33,400	37,500	33,400	37,500	41,000	48,000	48,000	52,900	54,600	63,100	
Power Supply	V/ph/Hz	220 - 240 / 1 / 50										380 - 415 / 3 / 50										
Nominal Current	A	4.41	4.39	5.43	5.39	9.38	8.04	12.42	10.76	13.45	13.87	20.82	18.21	7.11	6.15	8.98	8.42	9.48	8.79	10.69	10.73	
Indoor Unit																						
External Static Pressure		25		25		25		25		37		37		37		50		50		50		
Installation Position		Concealed																				
Dimension (H x W x D)		mm	220 x 913 x 680		220 x 913 x 680		266 x 1,012 x 736		268 x 1,270 x 530		268 x 1,270 x 530		290 x 1,226 x 775		290 x 1,226 x 775		290 x 1,226 x 775		330 x 1,226 x 815			
Weight		kg	24		25		34		37		37		54		54		54		57		66	
Outdoor Unit																						
Compressor		Type	Rotary										Scroll									
Dimension (H x W x D)		mm	540 x 820 x 320		540 x 820 x 320		540 x 820 x 320		695 x 1,018 x 412		790 x 980 x 427		840 x 1,018 x 412		840 x 1,018 x 412		1,250 x 1,032 x 412		1,250 x 1,032 x 412		1,250 x 1,032 x 412	
Weight		kg	32		32		40		59		70		90		90		112		112		123	
Refrigerant	Type	R410A																				
	Control	Capillary Tube																				
	Charge	kg	1.10		1.00		1.50		2.20		3.60		3.20		3.20		3.55		3.80		5.00	
Piping Connection	Liquid	in (mm)	φ 1/4 (6.35)		φ 1/4 (6.35)		φ 1/4 (6.35)		φ 3/8 (9.53)		φ 3/8 (9.53)		φ 1/2 (12.70)		φ 1/2 (12.70)		φ 1/2 (12.70)		φ 1/2 (12.70)		φ 1/2 (12.70)	
	Suction	in (mm)	φ 3/8 (9.53)		φ 1/2 (12.70)		φ 1/2 (12.70)		φ 5/8 (15.87)		φ 5/8 (15.87)		φ 3/4 (19.05)		φ 3/4 (19.05)		φ 3/4 (19.05)		φ 3/4 (19.05)		φ 3/4 (19.05)	

Product Specification 50Hz: Standard Models - Convertible Type

Model	Indoor Unit		4MWX0509AB		4MWX0512AB		4MWX0518AB		4MWX0524AB		4MWX0530AB		4MWX0536AB		4MWX0536AB		4MWX0542AB		4MWX0548AB			
	Outdoor Unit		4TWK0509AB		4TWK0512AB		4TWK0518AB		4TWK0524AB		4TWK0530AB		4TWK0536AB		4TWK0536AD		4TWK0542AD		4TWK0548AD			
Function			Cooling	Heating	Cooling	Heating	Cooling	Heating	Cooling	Heating	Cooling	Heating	Cooling	Heating	Cooling	Heating	Cooling	Heating	Cooling	Heating		
Nominal Capacity		Btu/h	8,900	9,700	11,900	12,300	17,000	19,400	24,000	27,300	30,000	33,400	34,100	37,500	33,400	36,800	41,000	48,000	48,000	52,900		
Power Supply		V/ph/Hz	220 - 240 / 1 / 50										380 - 415 / 3 / 50									
Nominal Current		A	4.65	4.84	5.35	5.05	9.29	9.50	12.53	11.49	13.60	13.63	1784	1701	6.61	5.73	8.29	8.20	9.23	9.11		
Indoor Unit																						
Installation Position	Ceiling, Low wall, Floor																					
Dimension (H x W x D)		mm	695 x 836 x 238		695 x 836 x 238		695 x 836 x 238		600 x 1,300 x 188		700 x 1,420 x 245		695 x 1,590 x 238		695 x 1,590 x 238		695 x 1,590 x 238		695 x 1,590 x 238			
Weight		kg	25		26		26		33		50		48		48		48		48			
Outdoor Unit																						
Compressor	Type		Rotary										Scroll									
Dimension (H x W x D)		mm	540 x 820 x 320		540 x 820 x 320		540 x 820 x 320		695 x 1,018 x 412		790 x 980 x 427		840 x 1,018 x 412		840 x 1,018 x 412		1,250 x 1,032 x 412		1,250 x 1,032 x 412			
Weight		kg	32		32		40		59		70		90		90		112		112			
Refrigerant	Type		R410A																			
	Control		Capillary Tube																			
	Charge	kg	1.10		1.00		1.50		2.20		3.60		3.20		3.20		3.55		3.80			
Piping Connection	Liquid	in (mm)	φ 1/4 (6.35)		φ 1/4 (6.35)		φ 1/4 (6.35)		φ 3/8 (9.53)		φ 3/8 (9.53)		φ 1/2 (12.70)		φ 1/2 (12.70)		φ 1/2 (12.70)		φ 1/2 (12.70)			
	Suction	in (mm)	φ 3/8 (9.53)		φ 1/2 (12.70)		φ 1/2 (12.70)		φ 5/8 (15.87)		φ 5/8 (15.87)		φ 3/4 (19.05)		φ 3/4 (19.05)		φ 3/4 (19.05)		φ 3/4 (19.05)			

Product Specification 50Hz: Standard Models - Cassette Type

Model	Indoor Unit	4MWC0512AB		4MWC0518AB		4MWC0524AB		4MWC0530AB		4MWC0536AB		4MWC0536AB		4MWC0542AB		4MWC0548AB		
	Outdoor Unit	4TWK0512AB		4TWK0518AB		4TWK0524AB		4TWK0530AB		4TWK0536AB		4TWK0536AD		4TWK0542AD		4TWK0548AD		
Function		Cooling	Heating	Cooling	Heating	Cooling	Heating	Cooling	Heating	Cooling	Heating	Cooling	Heating	Cooling	Heating	Cooling	Heating	
Nominal Capacity	Btu/h	11,900	12,300	17,000	18,400	23,200	25,600	28,300	30,000	34,100	37,500	34,100	37,500	41,000	48,000	48,000	52,900	
Power Supply	V/ph/Hz	220 - 240 / 1 / 50										380 - 415 / 3 / 50						
Nominal Current	A	5.35	4.94	9.00	8.71	11.84	10.65	13.12	13.12	19.78	18.13	6.60	6.00	8.70	9.20	9.10	9.50	
Indoor Unit																		
Installation Position	Ceiling																	
Body Dimension (H x W x D)		230 x 600 x 600		230 x 600 x 600		240 x 840 x 840		240 x 840 x 840		320 x 840 x 840		320 x 840 x 840		320 x 840 x 840		320 x 840 x 840		
Panel Dimension (H x W x D)	mm	50 x 650 x 650		50 x 650 x 650		60 x 950 x 950		60 x 950 x 950		60 x 950 x 950		60 x 950 x 950		60 x 950 x 950		60 x 950 x 950		
Weight (Body / Panel)	kg	20 / 2.5		20 / 2.5		30 / 6.5		27 / 6.5		32 / 6.5		32 / 6.5		32 / 6.5		32 / 6.5		
Outdoor Unit																		
Compressor	Type	Rotary																
Dimension (H x W x D)	mm	540 x 820 x 320		540 x 820 x 320		695 x 1,018 x 412		790 x 980 x 427		840 x 1,018 x 412		840 x 1,018 x 412		1,250 x 1,032 x 412		1,250 x 1,032 x 412		
Weight	kg	32		40		59		70		90		90		112		112		
Refrigerant	Type	R410A																
	Control	Capillary Tube																
	Charge	kg	1.00		1.50		2.20		3.60		3.20		3.20		3.55		3.80	
Piping Connection	Liquid	in (mm)	φ 1/4 (6.35)		φ 1/4 (6.35)		φ 3/8 (9.53)		φ 3/8 (9.53)		φ 1/2 (12.70)		φ 1/2 (12.70)		φ 1/2 (12.70)		φ 1/2 (12.70)	
	Suction	in (mm)	φ 1/2 (12.70)		φ 1/2 (12.70)		φ 5/8 (15.87)		φ 5/8 (15.87)		φ 3/4 (19.05)		φ 3/4 (19.05)		φ 3/4 (19.05)		φ 3/4 (19.05)	

- Cooling conditions: 80°F - DB / 67°F - WB Indoor & 95°F - DB Outdoor.
- Heating conditions: 68°F - DB Indoor & 45°F - DB / 43°F - WB Outdoor.
- Rated for 16 feet (5 meters) of evacuated refrigerant piping.



Ingersoll Rand (NYSE:IR) is a world leader in creating and sustaining safe, comfortable and efficient environments in commercial, residential and industrial markets. Our people and our family of brands—including Club Car®, Ingersoll Rand®, Schlage®, Thermo King® and Trane®—work together to enhance the quality and comfort of air in homes and buildings, transport and protect food and perishables, secure homes and commercial properties, and increase industrial productivity and efficiency. We are a \$14 billion global business committed to sustainable business practices within our company and for our customers. For more information, visit www.ingersollrand.com

Trane has a policy of continuous product and product data improvement and reserves the right to change design and specifications without notice.

